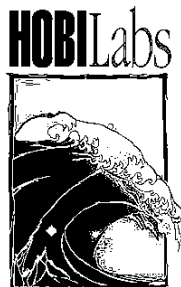


HydroSoft 2.5
Software for HOBI Labs Optical
Oceanographic Instruments

USER'S MANUAL

Effective Date June 27, 2002



Hydro-Optics, Biology, and Instrumentation
Laboratories, Inc.
P.O Box 859, Moss Landing, CA 95039 USA
www.hobilabs.com
888-414-HOBI
888-414-4624

Revisions:

June 27, 2002 – Many changes to support version 2.5. Major changes: spectral plot windows (section 6.6), calibration functions (section 9.2.11, and separate Backscattering Calibration Manual), support for multiple instrument connections (section 4.1.6).

February 20, 2002 – Update address

February 22, 2001 – Current version 2.02; Update formatting, Remove Draft designation; add references in section 7.4.3

October 30, 2000 – describes version 2.01

TABLE OF CONTENTS

1. INTRODUCTION.....	1
1.1. SYSTEM REQUIREMENTS.....	1
1.2. INSTRUMENT FIRMWARE REQUIREMENTS.....	1
1.2.1. A-BETA AND C-BETA	1
1.2.2. HYDROSCATS	1
2. INSTALLATION.....	3
2.1. CD-ROM.....	3
2.2. FLOPPY DISKS	3
2.3. INTERNET.....	3
2.4. INSTALLATION NOTES.....	4
2.5. REMOVING HYDROSOFT.....	4
3. QUICK START.....	5
4. WINDOWS.....	7
4.1. MAIN DATA WINDOW.....	7
4.1.1. DATA PLOT	7
4.1.2. POINTER COORDINATES.....	7
4.1.3. "CHANNELS" PANEL.....	8
4.1.4. STATUS DISPLAY	8
4.1.5. TOOLBAR BUTTONS.....	8
4.1.6. MULTIPLE DATA WINDOWS.....	9
4.2. SPECTRAL PLOT WINDOWS.....	9
4.3. TERMINAL WINDOWS.....	9
5. COMMUNICATING WITH AN INSTRUMENT.....	11
5.1. CONNECTING.....	11
5.1.1. CONNECTION DIALOG BOX.....	11
5.1.2. MANUAL CONNECTION	11
5.1.3. SEARCH CONNECTION.....	11
5.1.4. LOAD CALIBRATION FROM INSTRUMENT OPTION.....	12
5.1.5. OPEN PORT WITH IDENTIFYING INSTRUMENT	12
5.1.6. CONNECTION OPTIONS AT PROGRAM START	12
5.1.7. CONNECTING TO A SLEEPING INSTRUMENT	12
5.2. COLLECTING REAL-TIME DATA	12
5.3. SETTING SAMPLING OPTIONS.....	13
5.3.1. GENERAL OPTIONS	14
5.3.2. HYDROSCAT-SPECIFIC OPTIONS	14
5.4. RETRIEVING LOGGED DATA.....	14
5.4.1. BASIC PROCEDURE	14
5.4.2. DETAILS.....	15
5.5. SETTING INSTRUMENT DATE AND TIME.....	16

5.6.	CHANGING BAUD RATE.....	16
5.7.	SPECIAL MESSAGES FROM INSTRUMENTS.....	17
6.	<u>PLOTTING DATA</u>	19
6.1.	GRAPH PROPERTIES DIALOG BOX	19
6.2.	DEFAULT PROPERTIES	19
6.3.	AXIS SCALES	19
6.3.1.	DIALOG BOX SETTINGS	19
6.3.2.	OTHER SCALING AND ZOOMING OPTIONS.....	20
6.4.	DATA MARKERS	21
6.5.	GRAPH & GRID SETTINGS	22
6.6.	SPECTRAL PLOTS	22
6.7.	PRINTING AND EXPORTING GRAPHS.....	24
7.	<u>CALIBRATION DATA.....</u>	25
7.1.	LOADING CALIBRATIONS.....	25
7.2.	VIEWING AND EDITING CALIBRATION DATA.....	25
7.3.	BACKSCATTERING COEFFICIENT CALCULATION	26
7.4.	SIGMA CORRECTIONS.....	27
7.4.1.	A-BETA	27
7.4.2.	C-BETA	27
7.4.3.	HYDROSCATS	28
8.	<u>DATA FILES.....</u>	31
8.1.	RAW DATA.....	31
8.2.	CALIBRATED DATA	31
8.3.	RAW DECIMAL DATA	32
8.4.	PROCESSING RAW DATA FILES	32
8.4.1.	MAKING CALIBRATED DATA FILES	33
8.4.2.	MAKING RAW DECIMAL FILES	34
9.	<u>MENU COMMAND REFERENCE.....</u>	35
9.1.	FILE MENU	35
9.1.1.	NEW.....	35
9.1.2.	NEW WINDOW	35
9.1.3.	OPEN.....	35
9.1.4.	SAVE AS	35
9.1.5.	CLOSE	36
9.1.6.	SELECT CALIBRATION.....	36
9.1.7.	VIEW CALIBRATION.....	36
9.1.8.	SAVE CALIBRATION FILE.....	36
9.1.9.	PROCESS RAW FILES.....	36
9.1.10.	BACKSCATTERING PARAMETERS	36
9.1.11.	SIGMA CORRECTION PARAMETERS	36
9.1.12.	GENERAL PREFERENCES	36
9.1.13.	PRINT GRAPH.....	38
9.1.14.	EXPORT GRAPH.....	38

9.1.15.	CLOSE WINDOW	38
9.1.16.	EXIT	38
9.2.	INSTRUMENT MENU	38
9.2.1.	CONNECT	39
9.2.2.	CHANGE BAUD RATE	39
9.2.3.	SHOW TERMINAL	39
9.2.4.	DISCONNECT	39
9.2.5.	RESET	39
9.2.6.	START/STOP	39
9.2.7.	SLEEP/WAKE	40
9.2.8.	SAMPLING OPTIONS	40
9.2.9.	SET DATE/TIME	40
9.2.10.	GET DATA FROM INSTRUMENT	40
9.2.11.	CALIBRATE	40
9.2.12.	ABOUT INSTRUMENT	40
9.3.	GRAPH MENU	40
9.3.1.	PLOT VS. DEPTH	40
9.3.2.	PLOT VS. TIME	40
9.3.3.	PLOT VS. WAVELENGTH	41
9.3.4.	ZOOM IN	41
9.3.5.	ZOOM OUT	41
9.3.6.	PREVIOUS ZOOM	41
9.3.7.	AUTO SCALE	41
9.3.8.	APPLY DEFAULT PROPERTIES	41
9.3.9.	PROPERTIES	41
9.4.	WINDOW MENU	41

1. INTRODUCTION

HydroSoft supports HOBi Labs' HydroScat-6, HydroScat-4, HydroScat-2, a-Beta and c-Beta instruments by:

- collecting live data received through an RS232 port,
- applying instrument-specific calibrations to incoming data,
- storing raw and calibrated data in files,
- plotting live and stored data as a function of depth or time,
- controlling sampling rate and other instrument parameters
- retrieving logged data from instruments' internal memory,
- providing an ASCII terminal interface for direct communication with instruments, and
- collecting and processing data for calibrating backscattering sensors.

1.1. SYSTEM REQUIREMENTS

HydroSoft requires Windows 95, 98, 2000, NT 4.0, or subsequent 32-bit Windows operating system. A 133 MHz Pentium or faster processor with at least 32MB of RAM is recommended. HydroSoft and the files required to support it occupy a maximum of about 10M of hard disk space.

1.2. INSTRUMENT FIRMWARE REQUIREMENTS

Some HydroSoft functions require that instruments have a certain level of firmware (internal operating software) installed. It is always possible to connect an instrument and communicate to it through the terminal window, in the same manner as with a simple terminal program, however some functions may not be available with some instrument firmware versions.

You can determine the firmware version of your instrument by connecting it through a terminal emulator program, or through HydroSoft's terminal window, and sending the 'VER' command.

1.2.1. a-Beta and c-Beta

Firmware versions earlier than 1.39 do not support downloading of calibration data, and the raw data will be in decimal format.

1.2.2. HydroScats

HydroScat instruments with firmware earlier than version 1.60 may not be identified correctly, or provide downloading of data.

2. INSTALLATION

Windows 2000/XP NOTE: You must be logged on as a user with administrator privileges in order for HydroSoft to install all the necessary files on a Windows 2000 or Windows XP system. If not, the installation program will present an error message, and you must log on using a different account with the necessary privileges.

HydroSoft 2.5 installs some files differently from previous versions. If you have an earlier version installed on your machine, we recommend uninstalling it before installing version 2.5 or later.

2.1. CD-ROM

1. Insert the CD-ROM in your computer.
2. Run "InstallHydroSoftXXX.exe" (where XXX is the version number, e.g. 250) from the CD-ROM
3. Click the "Next" button in the installer's "Welcome" dialog box.
4. Decide whether you would like the HydroSoft application stored in the default directory shown. If not, select a different directory.
5. Click "Next" to start the installation.
6. When the installation is complete, click "Finish" to exit.

2.2. FLOPPY DISKS

1. Insert the first floppy disk in your computer.
2. Run "InstallHydroSoftFloppyXXX.exe" (where XXX is the version number, e.g. 250) from the floppy disk.
3. Click the "Next" button in the installer's "Welcome" dialog box.
4. Decide whether you would like the HydroSoft application stored in the default directory shown. If not, select a different directory.
5. Click "Next" to start the installation.
6. When prompted, insert the subsequent floppy disks.
7. When the installation is complete, press "Finish" to exit.

2.3. INTERNET

1. Download "InstallHydroSoftXXX.exe" (where XXX is the version number, e.g. 250) to your computer via HOBI Labs' web site at www.hobilabs.com.
2. Run the program "InstallHydroSoft.exe"

3. Click the “Next” button in the installer’s “Welcome” dialog box.
4. Decide whether you would like the HydroSoft application stored in the default directory shown. If not, select a different directory.
5. Click “Next” to start the installation.
6. When the installation is complete, click “Finish” to exit.

2.4. INSTALLATION NOTES

You need not reboot your computer after installation, unless the installer program instructs you to do so.

A “HydroSoft” item will be added to your start menu, and the directory you selected during installation will contain

- HydroSoft.exe – the HydroSoft program,
- ReleaseNotes.txt – a list of the differences between different versions of HydroSoft,
- astar.csv and aw.csv – files used by the sigma correction algorithm in HydroSoft (not required for all instruments),
- several help files with .RTF extensions, and
- Unins000.exe and Unins000.dat – a program and supporting data for uninstalling HydroSoft.





2.5. REMOVING HYDROSOFT

1. From the Start menu, select “Settings”, then “Control Panel”.
2. Double-click on the “Add/Remove Programs” icon.
3. Select HydroSoft from the list of programs.
4. Click the “Add/remove” button.

OR

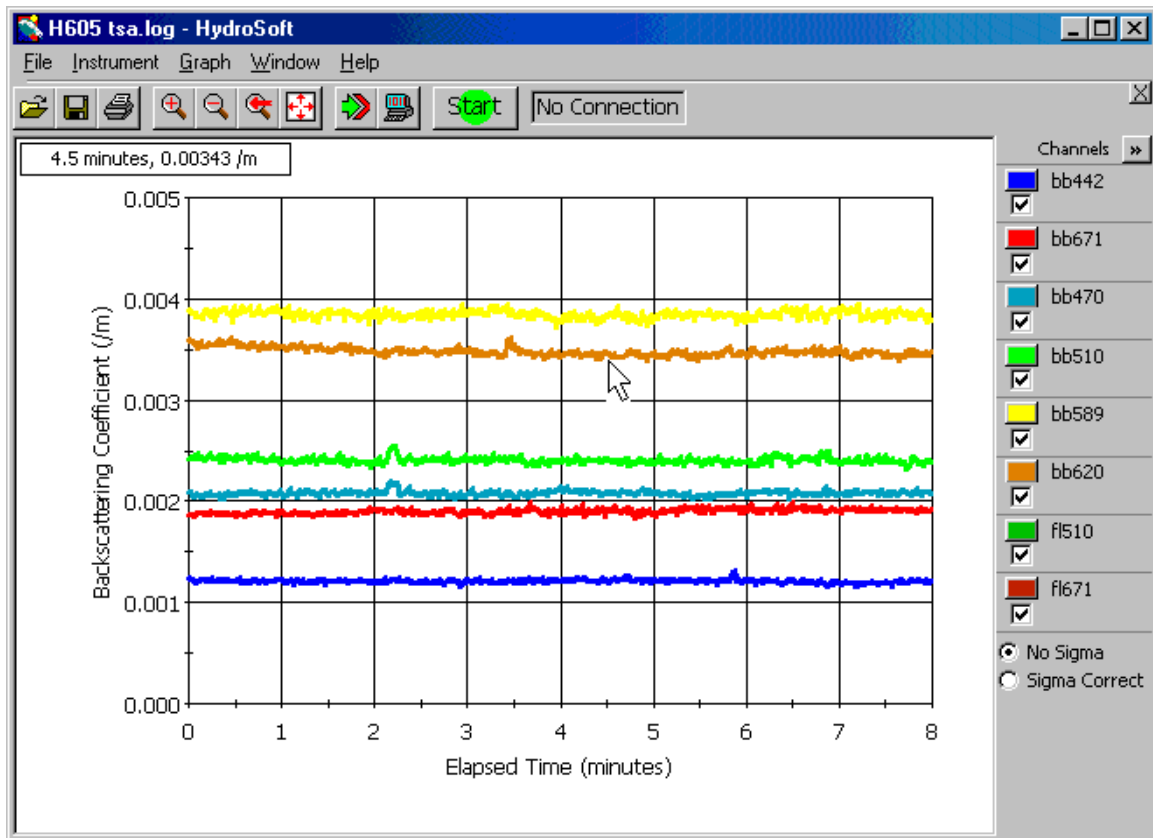
1. Open the directory into which you installed HydroSoft.
2. Double-click on the “unins000.exe” icon, which runs the un-installer. For HydroSoft versions before 2.10, the uninstaller was named “unwise.exe.”

3. QUICK START

1. If necessary, install HydroSoft as described in section 2.
2. Connect an instrument to a serial port on your computer.
3. Select HydroSoft from the Windows Start Menu.
4. Click  (or select Show Terminal from the Instrument menu).
5. Click  (or select Connect from the Instrument Menu – details in section 5.1).
6. Click the Search button.
7. After a short time HydroSoft should identify the instrument, load its calibration, and close the Connect dialog box.
8. In the main data window, select Plot Vs. Time from the Graph menu.
9. Click  (or select Start from the Instrument menu).
10. If no data are visible after a short time, click , and the plot will zoom as needed to show all data.
11. Double-click on the graph (or select Properties... from the Graph menu) to open the Graph Properties dialog box (details in section 6.1)
12. Adjust the display parameters according to your preferences.

4. WINDOWS

4.1. MAIN DATA WINDOW



4.1.1. Data Plot

A data plot appears whenever a data file is open. You can select whether the data are displayed as a function of depth, or of time, with commands on the Graph menu. For full details on data plots, see section 6.



4.1.2. Pointer Coordinates

Whenever the mouse pointer is within the plot area of a data window, a small window that shows the data coordinates of the pointer appears in the corner. For example:

4.5 minutes, 0.00343 1/m

This allows you to determine the exact value of a particular data point simply by pointing at it. This display reflects whatever units are shown on the graph axes. If the plot contains two Y axes (as for an a-Beta or c-Beta), both Y values will be shown.

4.1.3. “Channels” Panel

The Channels Panel on the right side of the data window lists the parameters displayed in the current graph. Normally these are the parameters of the current instrument, but they may be different if you open a stored data file with different parameters. If the panel is not visible, click on the  button to open it. To hide the panel, click its  button.

You can choose which channels are displayed in the graph by clicking the check boxes to the left of each channel name. You can also change the color used to display each channel by clicking on the colored box to the right of the check box. Note however that colors you select this way only apply to the currently displayed graph. To change the default colors used to display data in new graphs you must use the Graph Properties dialog (section 6.1).

The Channels panel may also include controls to select display options. For backscattering sensors, a pair of radio buttons enables you to select whether “Sigma” correction is applied to the current data (see section 7.3 for more about sigma correction).

4.1.4. Status Display

A text field at the top of the data window indicates whether an instrument is connected, and if so whether it is currently sampling, stopped, or sleeping. Various other messages may appear in the status field when appropriate.


If an instrument is connected, four more fields appear to the right of the status field. These show


- time elapsed since the first point in the current graph was received,
- depth of the instrument,
- voltage of the sensor’s batteries or external supply, and
- internal temperature of the sensor.

Note that the status parameters are only updated when an instrument is actively transmitting data. If the instrument has been stopped or sleeping for some time the values may be invalid.

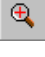

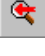




4.1.5. Toolbar buttons

Toolbar buttons in the data window provide shortcuts to commands that also appear in the menus, as listed below.

 File | Save As... (section 9.1.4)

 File | Open... (section 9.1.2)

 File | Print Graph... (section 9.1.13)

-  Graph | Zoom In (section 6.3.2)
-  Graph | Zoom Out (section 6.3.2)
-  Graph | Previous Zoom (section 6.3.2)
-  Graph | Auto Scale (section 6.3.2)
-  Instrument | Connect... (section 5.1)
-  Instrument | Open Terminal (section 4.3)
-  Instrument | Start/Stop (section 9.2.6)

4.1.6. Multiple Data Windows

If you open a data file while a data file is already open in the current window, the file will be opened in a new data window. You can also open a new, empty window with the **New Window** command on the **File** menu. Unlike in previous versions of HydroSoft, all data windows are functionally identical, and each window can support its own connection to an instrument.

Each new data window adopts the currently selected calibration file as its default for displaying raw data. However you can subsequently select a different calibration file, or even a different instrument type, in a particular window without affecting other open windows. For more about calibration files, see section 7.

New data windows also adopt the graph settings of the current window.

4.2. SPECTRAL PLOT WINDOWS

When viewing data from a HydroScat, you can select **Plot Vs Wavelength** from the **Graph** menu to open a window that shows the spectrum of data at specific points, or ranges of points, in the data shown in a main window's graph. For details, see section 6.6.

4.3. TERMINAL WINDOWS

Each data window has a corresponding terminal window that allows communicating directly to a connected instrument, and viewing, in raw form, the same data that are displayed graphically in the main data window. It contains the same **Instrument** menu, status display, and instrument-control buttons as the main data window. These controls produce the same results whether you use them in the terminal window or in the main data window.

Terminal windows contain **Command**, **Response** and **Data** areas that display information sent to and from the instrument. Characters you type while the Terminal window is active appear in the **Command** area, and are simultaneously

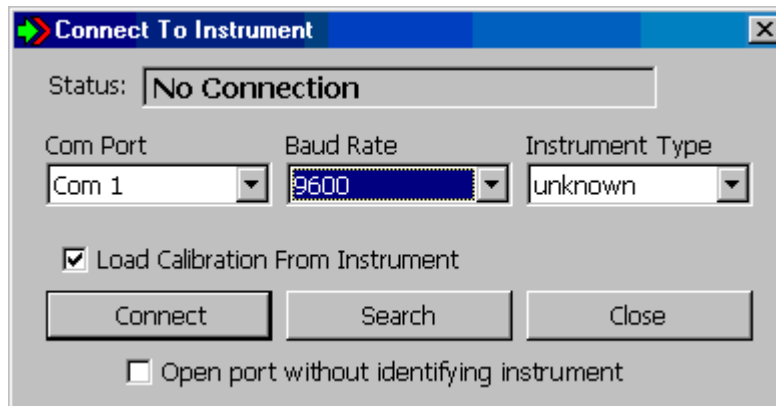
sent to the connected instrument. Command responses and other informational transmissions from the instrument appear in the Response area. Data transmissions appear in the Data area.

5. COMMUNICATING WITH AN INSTRUMENT

5.1. CONNECTING

To communicate with an instrument you must connect it to a serial (RS-232) communication port on your computer, and HydroSoft must open the port at the correct baud rate. Many operations also require that HydroSoft know what type of instrument is connected. Therefore HydroSoft queries each instrument to identify itself at the time of connection.

5.1.1. Connection Dialog Box



This dialog box appears each time you

- select Connect from the Instrument menu,
- click on the Connect button in a data window,
- attempt an operation that requires a connection, if a connection has not yet been established.

5.1.2. Manual Connection

If you click the Connect button, HydroSoft will open the currently selected port at the selected baud rate. Normally you need not select an instrument type, because HydroSoft will always request identification information from the instrument. If it receives a reply sufficient to identify the instrument, it will proceed with the connection and close the dialog box. If not, it will notify you and ask whether to open the connection anyway. In you instruct it to, it will proceed on the assumption that an instrument of the type you designate is connected.

5.1.3. Search Connection

If you click Search, HydroSoft will ignore the selected port and baud rate, and attempt a connection to each port, at each baud rate (from 4800 to 57600), until it receives valid identifying information from an instrument. The dialog box will automatically close if a valid connection is found.

5.1.4. Load Calibration From Instrument Option

If Load Calibration From Instrument is checked at the time an instrument is connected, HydroSoft will prompt the instrument to transmit the calibration information stored in the instrument's memory. This will override the currently selected calibration file, if any. See section 5.4 for more information about calibration files.

5.1.5. Open Port with Identifying Instrument

If this option is checked when you connect, HydroSoft will simply open the serial port at the baud rate you specify, without communicating with the instrument in any way. This allows you to use HydroSoft as a "dumb terminal" for troubleshooting, or for communicating with devices HydroSoft cannot identify.

5.1.6. Connection Options at Program Start

The Preferences command under the File menu provides three options that select whether, and how, a connection is established when HydroSoft first starts:


- Do Not Connect—HydroSoft makes no connection at startup;
- Restore Previous Connection—HydroSoft will open the Connect dialog and attempt to connect using the port and baud rate of the last successful connection;
- Search For Instruments—HydroSoft will open the Connect dialog and click the Auto Search button.

For applications in which you regularly connect using the same port and baud rate, the Restore Previous Connection option is usually the most convenient.


5.1.7. Connecting to a Sleeping Instrument

In some cases HydroSoft may not detect the presence of an instrument that is in its low-power "sleep" mode. If you have difficulty connecting to a sleeping instrument, we recommend you use the instrument's magnetic switch to wake it before connecting.

5.2. COLLECTING REAL-TIME DATA

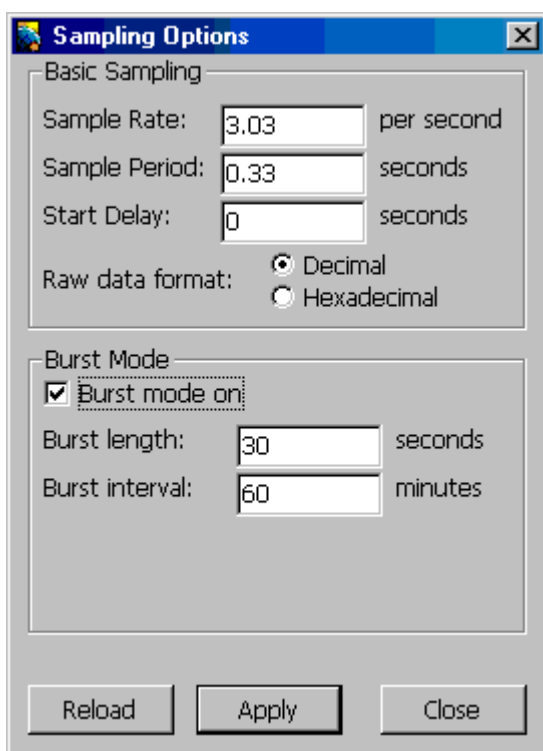
To start collecting data from a connected instrument, click  or select Start from the Instrument menu. If no graph is visible when you start collection, HydroSoft will open one, and will prompt you to name it if the Request user to name files when they are created preference is selected (also see 9.1.12).

Note that it is the instrument, not HydroSoft, that determines the pace of data collection once it has been started. Therefore there may be a delay before data actually appear. If set for burst mode, the instrument may even put itself to sleep periodically. See section 5.3 for information about sampling options.

When HydroSoft detects incoming data, it makes the  button visible, and changes the title of the Start menu option to Stop.

5.3. SETTING SAMPLING OPTIONS

To set the sampling rate and other parameters of a connected instrument, select Sampling Options from the Instrument menu. The Sampling Options dialog presents parameters that vary somewhat depending on the type of instrument, and on the instrument's configuration. The example at left below shows the options for an a-Beta or c-Beta; the example at right corresponds to a HydroScat-2 or HydroScat-4. HydroScat-6's have additional settings relating to their time-shared fluorescence channels. Further items may appear if your instrument is equipped with an anti-fouling shutter or other optional equipment.

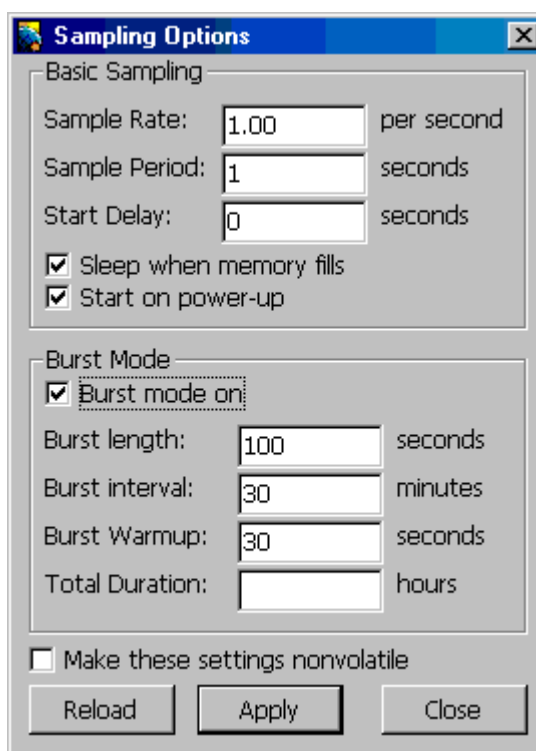


The dialog box titled "Sampling Options" for an a-Beta or c-Beta instrument. It features two main sections: "Basic Sampling" and "Burst Mode".

- Basic Sampling:** Includes input fields for "Sample Rate" (3.03 per second), "Sample Period" (0.33 seconds), and "Start Delay" (0 seconds). Below these are radio buttons for "Raw data format", with "Decimal" selected and "Hexadecimal" unselected.
- Burst Mode:** Includes a checked checkbox for "Burst mode on:", "Burst length" (30 seconds), and "Burst interval" (60 minutes).

At the bottom are three buttons: "Reload", "Apply", and "Close".

a-Beta/c-Beta Sampling Options



The dialog box titled "Sampling Options" for a HydroScat-2 or HydroScat-4 instrument. It features two main sections: "Basic Sampling" and "Burst Mode".

- Basic Sampling:** Includes input fields for "Sample Rate" (1.00 per second), "Sample Period" (1 seconds), and "Start Delay" (0 seconds). Below these are two checked checkboxes: "Sleep when memory fills" and "Start on power-up".
- Burst Mode:** Includes a checked checkbox for "Burst mode on:", "Burst length" (100 seconds), "Burst interval" (30 minutes), "Burst Warmup" (30 seconds), and "Total Duration" (empty field in hours).

At the bottom are three buttons: "Reload", "Apply", and "Close". A checkbox "Make these settings nonvolatile" is located above the buttons.

HydroScat-2, -4 Sampling Options

When the Sampling Options dialog is first open, it may take several seconds for the current settings to be retrieved from the instrument. Similarly, when you click the Apply button there will be a noticeable delay while HydroSoft transmits, then confirms, the new settings. This confirmation is important because it allows you to check that the settings were entered as you intended. Instruments may reject settings they cannot support (for example, burst lengths that are longer than the burst interval).

5.3.1. General Options

You should consult your instrument's documentation for details that may not be covered in this overview of sampling options.

Sample Rate and Sample Period, by definition, have an inverse relationship. Changes you make to one will automatically affect the other. Also note that the period is actually the controlling parameter, and has a resolution of 0.01 seconds. Therefore some exact sample rates are not available. For example, if you enter a rate of 3 per second, the actual value will be set to 3.03, which is the inverse of 0.33, the nearest available period.

In both examples above, the burst-mode parameters are inactive because burst mode is not on. To edit the burst-mode parameters you must first check the Burst Mode On option.

Burst Interval is the time between the *starts* of successive bursts. For example, if Burst Length is set to 10 seconds and Burst Interval is set to 1 minute, the sensor will sleep for 50 seconds between bursts.

5.3.2. HydroScat-specific Options

HydroScat sensors have additional sampling parameters that do not apply to x-Beta sensors. Sleep when memory fills is self-explanatory. Start on power-up is only relevant for instruments without batteries, or whose batteries may be disabled (whether or not intentionally). Make these settings nonvolatile controls whether the settings will remain in effect even if the sensor is reset or loses power.

Total Duration controls whether burst-mode casts will automatically halt after a specified time. If it is blank or zero, burst-mode casts will continue indefinitely until halted by a user, full memory, or low battery.

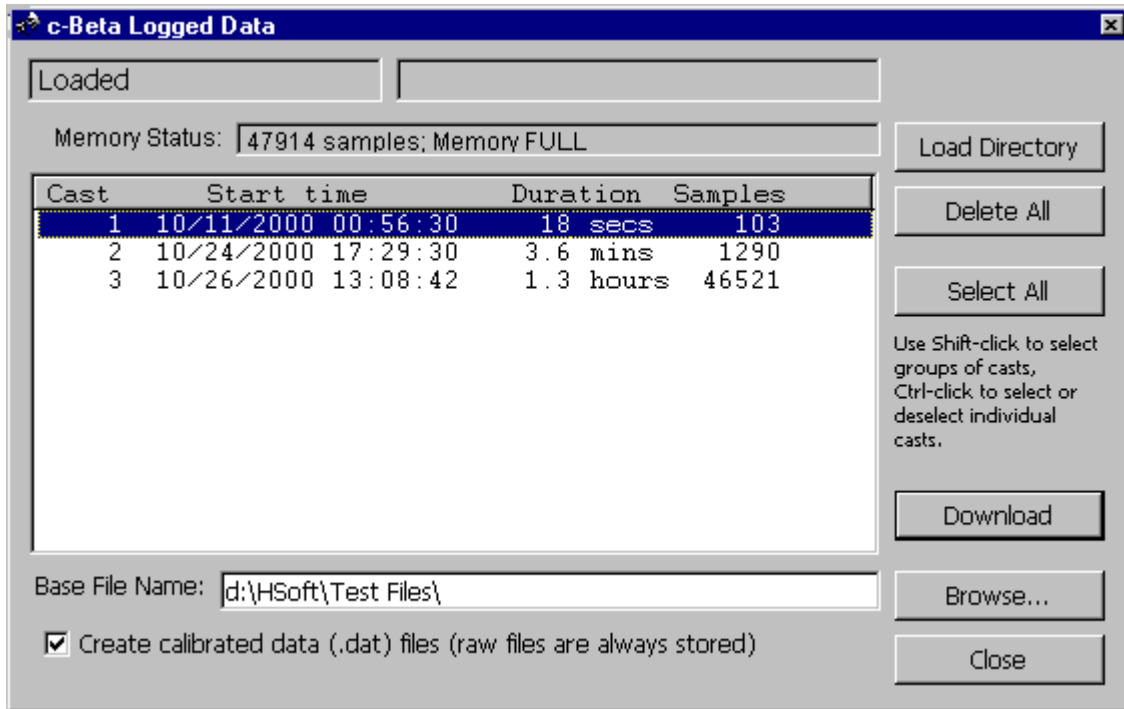
HydroScat-6s have additional parameters for controlling their two fluorescence channels. Because these channels share the receivers of two backscattering channels, you can choose whether they are devoted to backscattering only, to fluorescence only, or time-shared between the two functions. See the HydroScat-6 User's Manual for more details.

5.4. RETRIEVING LOGGED DATA

The Get Data From Instrument command enables you to view a list of casts stored in an instrument's memory, transfer casts from the instrument to files on your computer, and erase the instrument's memory. Casts you transfer are stored in individual files whose location and base name you specify. The cast number is appended to the name of each file.

5.4.1. Basic Procedure

- Select Get Data From Instrument on the Instrument menu.
- A dialog box like the following will appear.



- After the directory is loaded, select the cast or casts you wish to retrieve.
- Enter a base file name for the downloaded files. The cast number will be appended to this base name to create a unique name for each cast you download.
- If necessary, click **Browse** and select a destination directory for the downloaded files.
- Click **Download**. Depending on the quantity of data and baud rate, downloading may take some time. Status messages and a graphical indicator will show the download progress.
- To clear the instrument's memory after verifying the desired casts were downloaded, click **Delete All**.
- Click **Close** to dismiss the dialog box.

5.4.2. Details

Depending on the type of instrument and the number of casts stored, loading the directory may take a number of seconds. The status message in the upper left corner indicates if the directory is loaded, as above, or if it is in the process of loading.

The memory status line indicates how much of the instrument's memory is presently used.

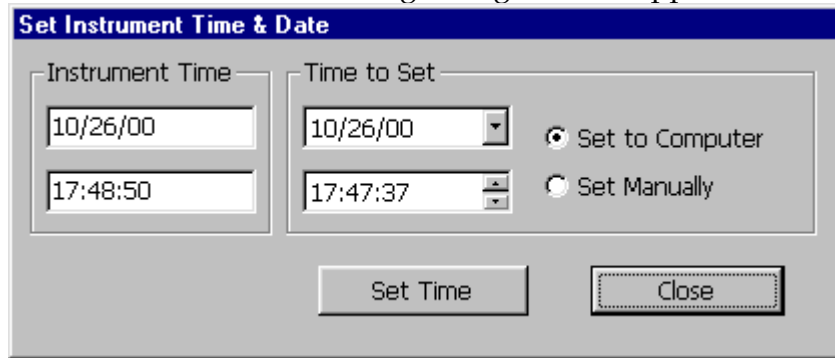
You can select arbitrary groups of casts for downloading. To select a contiguous group of casts, click on the first item in the group, then shift-click on the last item; or hold down the shift key while using the arrow keys. To select or unselect non-contiguous casts, control-click on them; or hold down the control key while using the arrow keys to move through the directory, and press the space bar to select or unselect casts.

Data are always collected in raw form. If the Create calibrated data (.dat) files option is checked, a calibrated file will also be created for each downloaded cast. The calibration currently in effect for the main data window will be applied to these data (see section 7 for more information about calibrations).

Because of the way HydroScat and x-Beta instruments handle their memory, it is not possible to delete individual casts—you can only erase the instrument's entire memory.

5.5. SETTING INSTRUMENT DATE AND TIME

To set the real-time clock in a connected instrument, select Set Date/Time from the Instrument menu. The following dialog box will appear.



By default, the instrument clock will be set to match your computer's clock when you click the Set Time button. However you can also select the Set Manually option, enter an arbitrary date and time in the appropriate fields, and set the instrument to that date and time.

When it sets the time, HydroSoft also requests the instrument to echo the new time so that you can confirm it has been set properly. This can take several seconds.

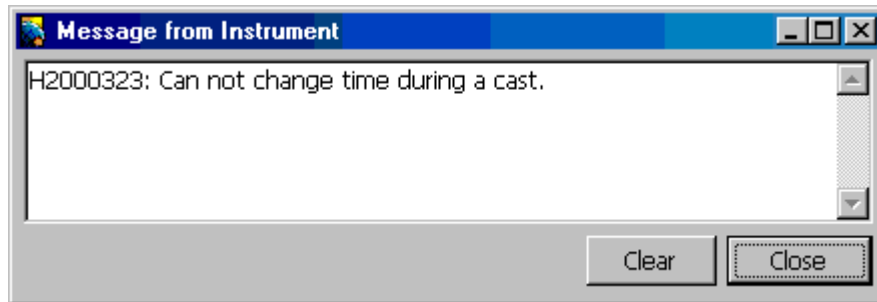
5.6. CHANGING BAUD RATE

The Change Baud Rate command on the Instrument menu opens a dialog box in which you can select a new baud rate for communication between the connected instrument and your computer. If you select a new baud rate and click OK, HydroSoft sends a command (at the current baud rate) to the instrument instructing it to change rates. HydroSoft then changes the baud rate of your computer to the new rate.

If the instrument does not respond after a baud rate change, it may be that a communication error interfered with the transition. In this case, try changing back to the previous rate, or use the Search option in the Connect dialog box to find the correct rate.

5.7. SPECIAL MESSAGES FROM INSTRUMENTS

In some circumstances an instrument may generate an important message (marked in the data stream by an exclamation point) that HydroSoft is not expecting. If it receives such a message, HydroSoft will present it to you in this manner:



In this example, a user has attempted to set the time of a HydroScat-2's clock while the instrument was logging, which the instrument does not permit. The "H2000323:" at the beginning of the message is the serial number of the instrument that sent it. In case you have multiple instruments connected, this allows you to identify the source of the message.

HydroSoft will beep and bring this window to the front whenever such a message is received. If multiple messages are received they will accumulate in the window until you close it or click the Clear button.

If HydroSoft's terminal window is open, these messages will be displayed there instead of the special Message window.

6. PLOTTING DATA

Data plots in HydroSoft may show data read from an existing file, or received in real time from a connected instrument.

6.1. GRAPH PROPERTIES DIALOG BOX

All graphical characteristics of a data plot are controlled through the Graph Properties dialog box. To open it, select Properties from the Graph menu, or double-click on a graph. When you open the dialog box it contains the settings of the current graph, or if no graph is open, the default settings.

6.2. DEFAULT PROPERTIES

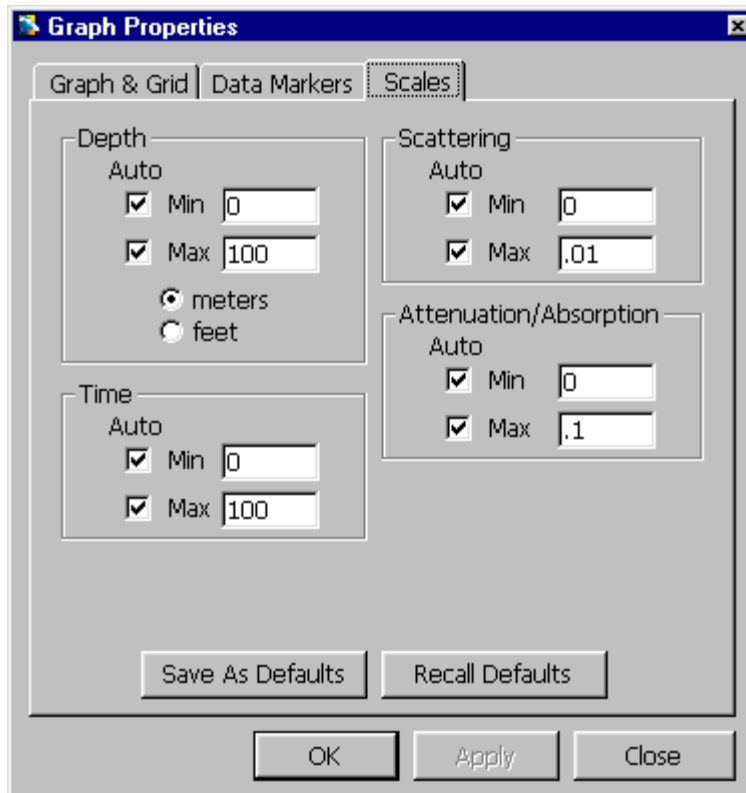
Default properties are those applied to newly-created graphs, or applied when you use the Apply Default Properties command in the Graph menu.

In addition to their unique controls, each of the three tabs in the Graph Properties dialog box contains buttons labeled Save as Defaults and Recall Defaults. When you click Save as Defaults, all the properties in the currently active tab are stored as default properties for subsequently opened graphs. Clicking Recall Defaults will replace the current properties in the dialog box with the defaults (but they will not be applied unless you click the OK or Apply button).

6.3. AXIS SCALES

6.3.1. Dialog Box Settings

The Scales tab in the Graph Properties dialog box controls the limits of each axis in a graph. It contains properties for Time, Depth, Scattering and Attenuation or Absorption axes, although these do not normally all appear in one graph. If the properties apply to a particular graph only the controls appropriate to that graph will be enabled. If you open the Graph Properties dialog when no graph is open, all controls will be enabled for purposes of setting the defaults (and the Apply button will be disabled).



The Auto options for each axis limit control whether the scale will be adjusted to the range of the data. Note that the effect of auto-scaling is intentionally limited in two ways:

1. Auto-scaling can only expand the axis ranges, not contract them.
2. Auto-scaling only applies at the time new data are added to a graph, either from a connected instrument or upon opening a file. That is, you *can* set the axis limits to values that would exclude some existing data points, regardless of whether auto-scaling is on. But auto-scaling will expand the limits if new data that exceed the current limits are subsequently added.

These characteristics are especially useful when collecting data in real time from an instrument. In real data it is not unusual for an outlying point to skew the auto-scaling. If this happens while you are collecting data you can re-adjust the axis settings to exclude the outlying point, but leave auto-scaling on so that it will still accommodate new data.

6.3.2. Other Scaling and Zooming Options

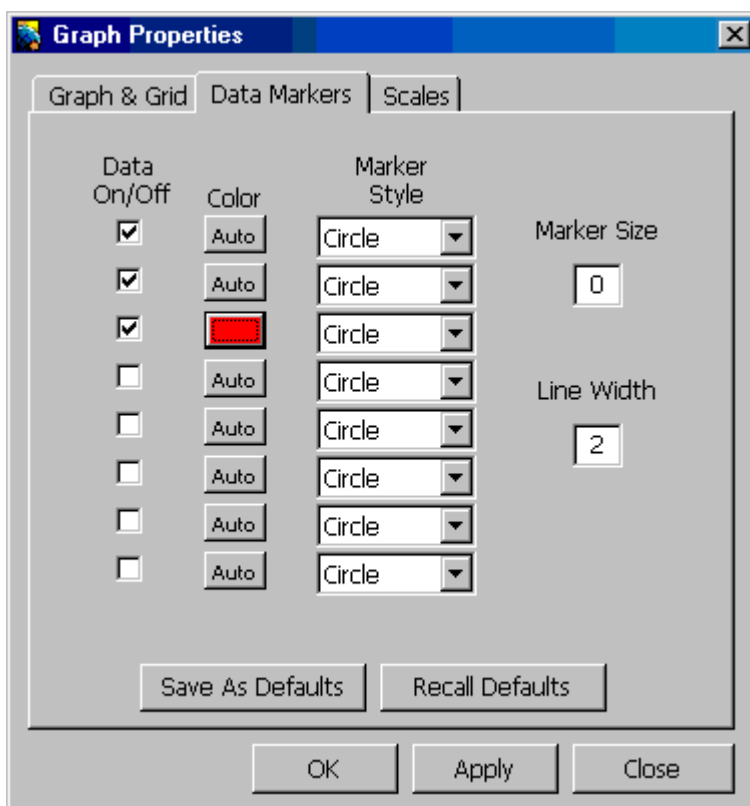
While you can enter exact numeric limits for each axis via the Graph Properties dialog box, HydroSoft provides several more rapid options. The Zoom In and Zoom Out commands, and their toolbar equivalents, contract or expand the axis limits by a factor of 2.

The Auto Scale command and button adjusts the scales to exactly fit the entire data set. This is not subject to the limitations imposed on axis auto-scaling, described under 6.3.1.

At any time you can “drag-zoom,” that is, click and drag the mouse pointer in the graph area to define a rectangle. When you release the mouse, the axis limits will be set to the boundaries of that rectangle. One of the quickest ways to navigate in a dataset is to first use Auto Scale to show all the data, then drag-zoom to expand the subset of interest.

After changing the scaling using one of the zoom commands, or drag-zoom, you can use the Previous Zoom command or button to undo the changes.

6.4. DATA MARKERS



The properties in this tab control the color, marker style and marker size of each data series (up to 8) in the graph.

- To change the color, click on the color block and select a color from the subsequent dialog. If you select “Auto”, the color will automatically be set to match the wavelength of the corresponding instrument channel.
- To change the marker style, select a style from the Marker Style combo box

- To change the marker size, type a new size into the Marker Size text box. If you set the size to 0 (zero), no markers will appear.
- To change the width of lines between points, type a new number into the Line Width text box. If you enter 0 (zero), no lines will appear. Note that if you set both Marker Size and Line Width to zero, your data will be invisible!

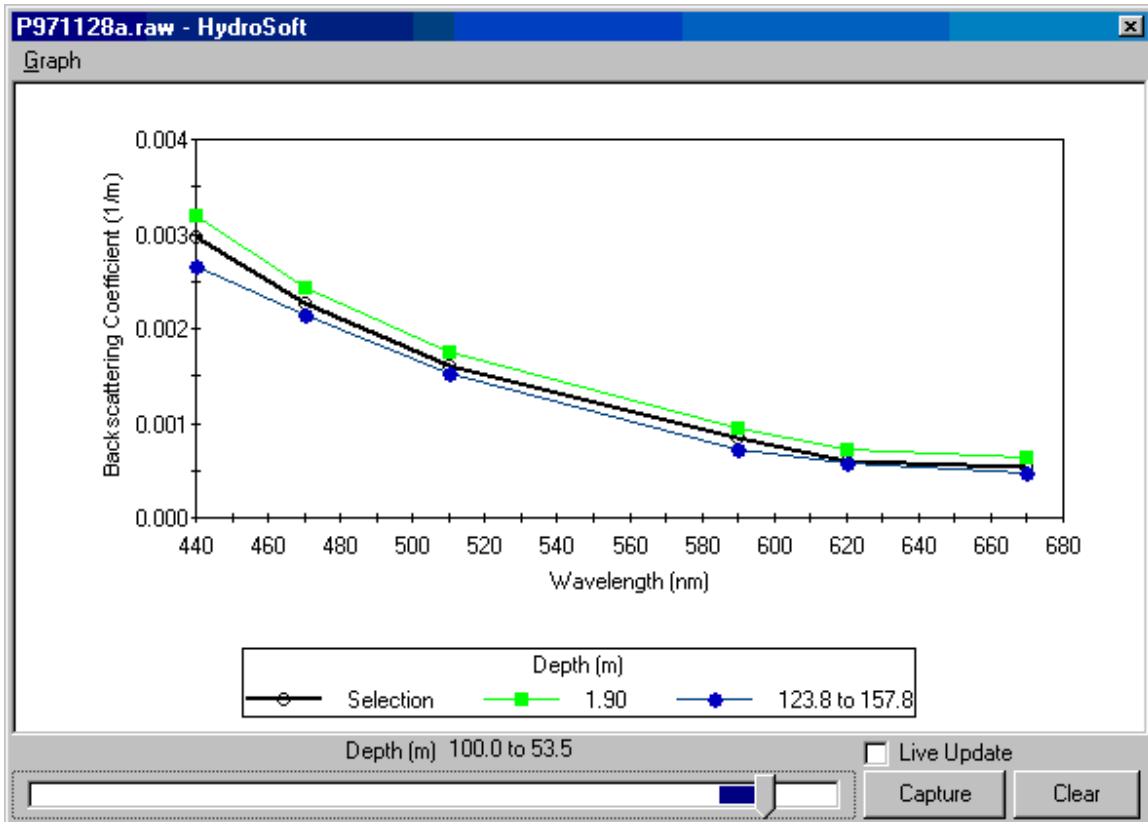
6.5. GRAPH & GRID SETTINGS



The Graph & Grid tab in the Graph Properties dialog box controls the color and style of the grid, the color of the graph interior (the part containing the data), and the color of the graph exterior (the border area containing the axis labels).

6.6. SPECTRAL PLOTS

If data from a HydroScat are shown in a main data window, you can select Plot Vs Wavelength from the Graph menu to open a window that shows the spectrum of data at specific points, or ranges of points, in the data shown in the main window's graph.



Initially a single trace shows the spectrum measured at a particular depth or time. The slider control at the bottom of the window selects the point on the parent graph whose spectrum is shown, and you can drag the slider to view the changes in spectrum throughout the data series. You can view an average of data over a range of points by holding down the shift key while dragging the slider from left to right. Clicking the Capture button freezes the currently displayed spectrum, but leaves the slider active so that you can compare the captured spectrum to others. You can capture many spectra for simultaneous display. In the display, the current selection is the average of data collected at depths from 53.5 m to 100 m; captured spectra from 1.9 m, and another average from 123.8 m to 157.8 m, are also shown. If the parent window shows data versus time rather than depth, time values will be shown. Clicking the Clear button removes all captured spectra from the plot.

If the parent window is receiving data from a connected instrument, and the Live Update option is checked, the spectrum display will update each time a new sample is received. Live Update does not affect captured spectra.

The scale of the backscattering axis is the same as that of the graph in the parent window. If you change the scale in the parent window while a spectrum window is open, the spectrum window's scale will also change when you next bring it to the front.

6.7. PRINTING AND EXPORTING GRAPHS

You can print the graph from a main data window by selecting **Print Graph...** from the **File** menu. For details, see section 9.1.13. In a spectral plot window, this command appears on the window's **Graph** menu. You can also export a plot to a graphics file with the **Export Graph...** command. For details of exporting see section 9.1.14.

7. CALIBRATION DATA

In general, data are received from instruments in raw form, and must be converted to calibrated units. The coefficients required for this conversion are unique to each instrument, and may be revised from time to time when the instrument is recalibrated. HydroSoft requires an appropriate calibration to be loaded before it can plot or store calibrated data from an instrument or raw data file.

In addition to the instrument's calibration parameters, the calibrated results from backscattering measurements depend on values controlled with File menu commands **Backscattering Parameters...** (section 7.3) and **Sigma Correction Parameters...** (section 7.4).

7.1. LOADING CALIBRATIONS

Calibrations can be loaded either directly from a connected instrument, or from a file on the host computer. To load an instrument's calibration, check the **Load Calibration From Instrument** option while connecting to the instrument (see section 5.1). To load a calibration from a file, choose **Select Calibration File** from the File menu.

If you select a new calibration file while an instrument is connected, or while a raw data file is open, HydroSoft will only load it if it is of a matching type. HydroSoft will inform you if the type does not match. It will also warn you if the serial number of the instrument does not match that contained in the calibration file, but it will offer you the option of loading it even if the serial numbers do not match.

Once a calibration file is loaded, it remains in effect until a different one is loaded. When you exit HydroSoft, it stores the name of the current calibration file. If the **Automatically recall last selected calibration file** option is selected in the Preferences dialog box, the file will be reloaded the next time HydroSoft starts up. If you have more than one data window open in HydroSoft, you can select a different calibration file for each one. The most recently selected file in any window will be saved as the default.

7.2. VIEWING AND EDITING CALIBRATION DATA

You can see the details of the current calibration by selecting **View Calibration** from the File Menu. This opens a dialog box whose format and behavior depend somewhat on the type of instrument to which the calibration applies. Refer to the documentation of each instrument for information about its calibration.

Normally you should not need to modify calibration data for an instrument, and the fields in the Calibration dialog box are locked to discourage casual changes. However you can unlock most fields by clicking on the lock icon in the dialog box. Because correct calibration files are critical to the accuracy of your data, use care

when modifying them. To reduce confusion we encourage you to enter a description, in the comment field provided, of any changes you make.

To save a copy of the currently loaded calibration, select Save Calibration from the File menu.

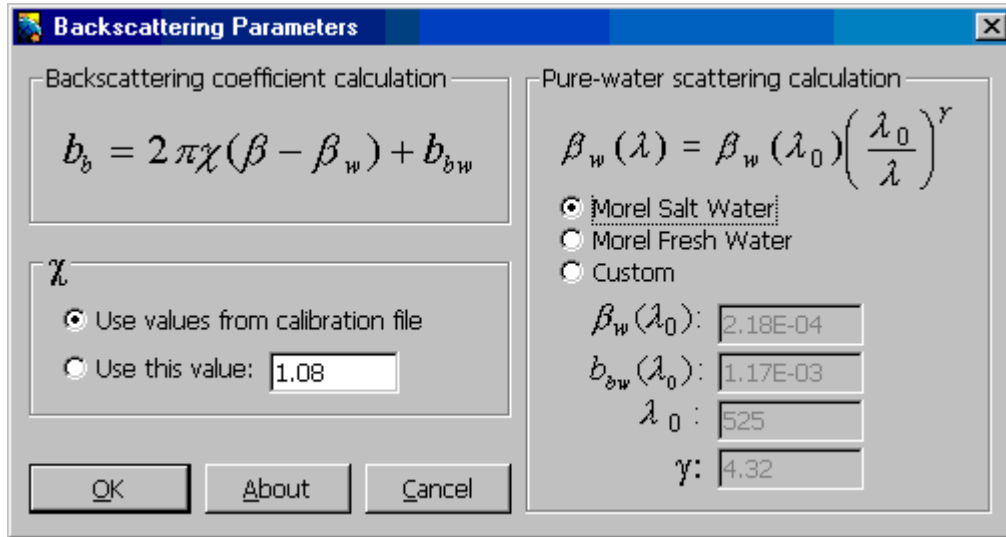
7.3. BACKSCATTERING COEFFICIENT CALCULATION

Backscattering sensors like HOBI's measure the value of the volume scattering function, commonly represented as $\beta(\psi)$ where ψ is the scattering angle, over a fixed range of angles. The backscattering coefficient b_b must be calculated from this value and *a priori* knowledge about the relationship between $\beta(\psi)$ and b_b for typical particles. The calculation is as follows.

$$b_b = 2\pi\chi(\beta - \beta_w) + b_{bw}$$

where β_w is the scattering of pure water in the range of angles measured by the sensor, and b_{bw} is the backscattering coefficient of pure water. χ is the coefficient of proportionality between β and b_b for particles, and while it is not constant for all particle types, it does not vary much in typical natural waters.

For most applications the default values for either salt or fresh water will provide the most accurate results, but users with detailed knowledge of the issues may wish to change the parameters using the Backscattering Parameters... command from the File menu, which opens the following dialog box:



Pure-water scattering values are calculated from values presented in A. Morel, "Optical Properties of Pure Water and Pure Sea Water," *Optical Aspects of Oceanography*, M. G. Jerlov and E. S. Nielsen (eds.), Academic Press, New York, 1974, chap. 1, pp 1-24. However by selecting the "custom" option you can modify the model. You can also remove the pure water factor entirely by choosing "custom" and setting the parameters to zero.

7.4. SIGMA CORRECTIONS

Sigma correction is an adjustment to improve the accuracy of backscattering measurements in highly-attenuating water. Some light that would otherwise be detected as backscattering is lost to attenuation in the water between the instrument and the detection volume, causing backscattering to be underestimated. We compensate for this applying the following correction:

$$b_b = \sigma(K_{bb}) \cdot b_{bu}$$

where b_{bu} is the uncorrected backscattering. $\sigma(K_{bb})$ is a complicated function of the sensor's optical geometry, but can be closely approximated by

$$\sigma(K_{bb}) = k_1 \exp(k_{\text{exp}} K_{bb})$$

where K_{bb} is the coefficient of attenuation for light traveling from the sensor to the sensing volume and back. k_{exp} and k_1 are characteristic of the specific instrument, and are included in its calibration file.

Earlier versions of HydroSoft used a third-order polynomial approximation for $\sigma(K_{bb})$, and the current version still uses this if the constant k_{exp} is not present in an instrument's calibration data.

$$\sigma = k_1 + k_2 K_{bb} + k_3 K_{bb}^2.$$

HydroSoft selects the method for estimating K_{bb} based on the instrument type, and also allows adjustment of various parameters used for the different instruments. Unless they thoroughly understand the optical considerations involved, users should leave these set to their default values.

Calibrated data files also include uncorrected backscattering values, so that users can apply their own corrections outside HydroSoft if they prefer. If a and b (or c) measurements are available at the appropriate wavelength(s), users can calculate accurate sigma corrections using the relationship

$$K_{bb} \approx a + 0.4b.$$

7.4.1. a-Beta

The K value measured by a-Beta is equivalent to K_{bb} . Therefore it can be used directly in the sigma calculation. This gives the most accurate correction possible, and no user-variable parameters are needed.

7.4.2. c-Beta

For c-Beta measurements, HydroSoft estimates that

$$K_{bb} = pc,$$

where p is set to 0.6 by default, but can be changed by the user. Users may also choose to apply the same K_{bb} estimation technique that is applied to HydroScat instruments.

7.4.3. HydroScats

Since HydroScats do not make a direct measurements of attenuation, their K_{bb} is estimated from

$$K_{bb} = a + 0.4b$$

where a is estimated from *a priori* data, and b is estimated from the measured b_b .

a is calculated from the following model:

$$a(\lambda) = [a_w(\lambda) + 0.06a^*(\lambda)C^{0.65}] \cdot [1 + 0.2 \exp(-\gamma_y(\lambda - 440))] + a_d(400) \exp(-\gamma_d(\lambda - 400))$$

where the first two terms account for the contributions of pure water and chlorophyll, and the last term for dissolved organic material. $a_w(\lambda)$ is the pure water absorption and is known from laboratory measurements. The default values supplied with HydroSoft are from Pope and Fry, ["Absorption spectrum (380-700 nm) of pure water. II. Integrating cavity measurements," *Applied Optics*, 36, 8710-8723.]. $a^*(\lambda)$ is a function derived empirically by Prieur and Sathyendranath ["An optical classification of coastal and oceanic waters based on the specific spectral absorption curves of phytoplankton pigments, dissolved organic matter, and other particulate materials, *Limnol. Oceanogr.*, 26(4), 671-689], and modified by Morel ["Light marine photosynthesis: a spectral model with geochemical and climatological implications," *Prog. Oceanogr.*, 26, 263]. C is the chlorophyll concentration in mg/m³ which can be set by the user, as can γ_y , γ_d , $a_d(400)$.

b is estimated from

$$b = b_{bu} / \tilde{b}_b$$

where \tilde{b}_b is the backscattering probability, which can be set by the user.

The Sigma Correction Parameters dialog box is shown below, with typical settings for a HydroScat sensor. Because there are many parameters available which can affect the calculation, you can enter a wavelength and press the Calculate button to test whether the calculated values of a are sensible. If in doubt, we recommend using the default settings.

Sigma Correction Parameters

HydroScats c-Beta About

Estimation of K_{bb}

$$K_{bb} = a + 0.4 b_b / \tilde{b}_b$$

$$a(\lambda) = \left[a_w(\lambda) + 0.06 a^*(\lambda) C^{0.65} \right] \cdot \left[1 + 0.2 \exp(-\gamma_y(\lambda - 440)) \right] + a_d(400) \exp(-\gamma_d(\lambda - 400))$$

C:

γ_y :

$a_d(400)$:

γ_d :

$\tilde{b}_b(\lambda)$:

$a_w(\lambda)$:

$a^*(\gamma)$:

Example Calculation

Wavelength: a:

8. DATA FILES

For information about retrieving internally logged data from an instrument, see section 5.4.

Data may be stored in raw form, that is in the form they are transmitted from an instrument, or in calibrated form, or both. We strongly recommend you save your raw data files, for two main reasons. First, under some circumstances you may wish to apply a revised calibration to existing data. Second, raw files contain some housekeeping information that can be useful for troubleshooting in the event of a problem. Therefore when collecting data from an instrument, HydroSoft always saves raw data, and gives you the choice of whether to save calibrated data simultaneously.

HydroSoft stores data directly to disk whenever a data file is open, even if it is a new, untitled file. Therefore the size of the files you collect is limited by your disk space, rather than your RAM, and you are less likely to lose data in the event of a computer crash. The number of data points you can display in a plot *is* limited by RAM, but this limit does *not* affect the corresponding data files.

8.1. RAW DATA

Raw data files contain a literal record of every byte received from an instrument during the time the file is open. Depending on the instrument type and its configuration this may consist of hexadecimal numbers, decimal numbers, text messages, binary data, or a mixture thereof. HydroSoft adds a header at the beginning of the file with some information about its origin and history, but applies no formatting whatsoever to the main data. HydroSoft normally names raw data files with the extension “.RAW”.

8.2. CALIBRATED DATA

HydroSoft normally names calibrated data files with the extension “.DAT”. Calibrated data files start with a header identifying the origin and type of the data, followed by lines of comma-separated values. Below is a sample from a HydroScat-2 data file.

The heading [SigmaParams] signals the start of parameters relating to the sigma correction, which is described in section 7.3.

The parameters after the heading [bbParams] are those described in section 7.3.

The strings under the heading of [Channels] are the labels that appear in the Channels panel of HydroSoft data windows (see section 4.1.2). The line marked as [ColumnHeadings] contains a comma-separated list including identifiers for each parameter in the data lines.

```

[Header]
HydroSoftVersion=2.5
CreationDate=05/14/02 22:14:06
FileType=dat
DeviceType=HydroScat-2
DataSource=d:\HSoft\Test Files\4-5-00.raw
CalSource=d:\Instrument Calibration Files\hs2\H2000324 000405.ini
Serial=H2000324
Config=W1B3R1S0I2
[SigmaParams]
ad400=.01
aStarFile=C:\Program Files\HOBI Labs\aStar.csv
awFile=C:\Program Files\HOBI Labs\aw.csv
bbTildeValue=.015
C=.1
gammad=.011
gammay=.014
ExponentialFit=False
[bbParams]
PureWaterModel=Custom
bb0=0
beta0=0
lambda0=525
gammaLambda=4.32
chi=FromCalFile
[Channels]
"bb470"
"bb676"
"fl676"
[ColumnHeadings]
Time,Depth,bb470,bb676,fl676,bb470uncorr,bb676uncorr,fl676uncorr
[Data]
36622.0810034722,5.349999,2.200723E-02,.0173337,5.193215E-
04,.0188008,.0160407,5.193215E-04,

```

Regardless of instrument type, time and depth appear as the first two parameters in the data lines. Times are stored as double-precision real numbers corresponding to the number of days since midnight, January 1, 1900. This is the native format of dates and times in Microsoft Excel.

8.3. RAW DECIMAL DATA

Raw decimal data may be needed for troubleshooting, or to review housekeeping data such as supply voltages and instrument temperature. HydroSoft generates decimal data files from raw files, but cannot read or graph them.

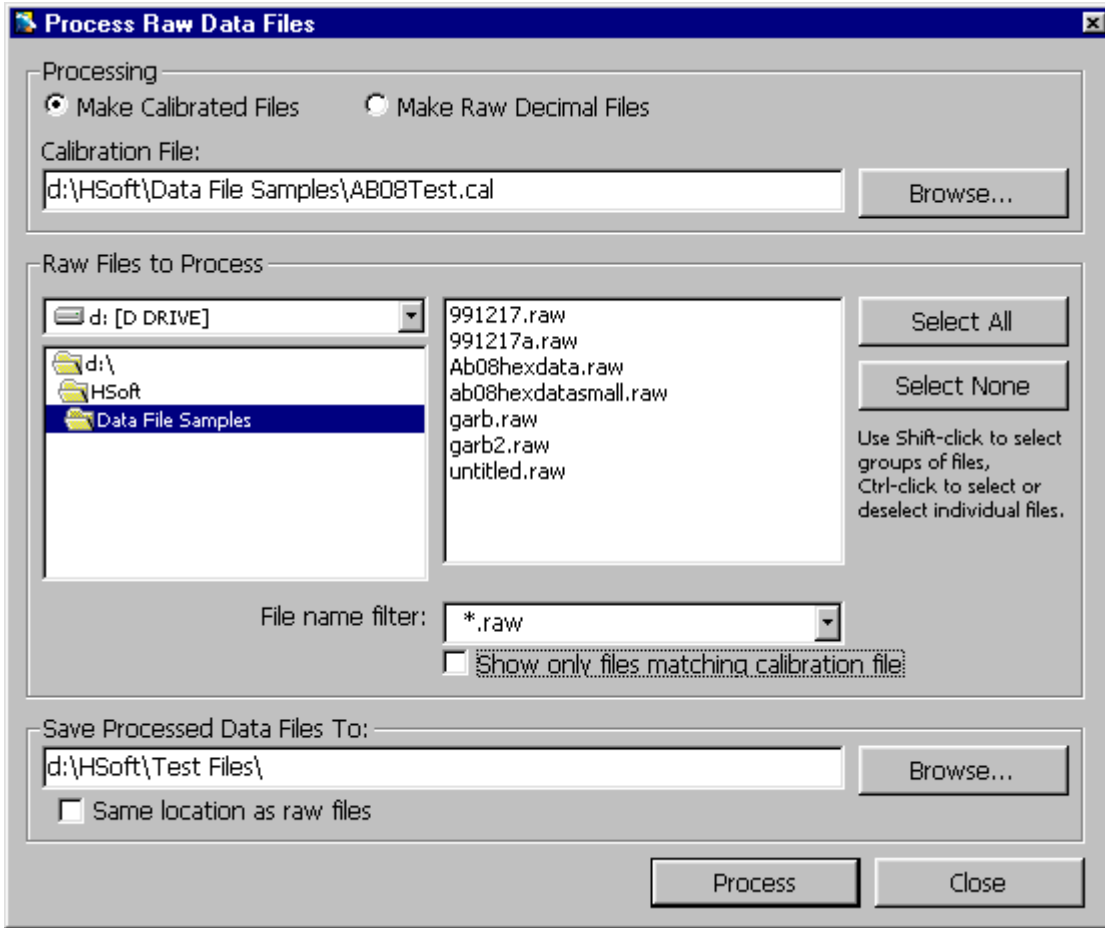
8.4. PROCESSING RAW DATA FILES

The Process Raw Files command on the File menu allows you to generate calibrated data (.dat) files or raw decimal (.dec) files from raw data files. This is useful if

- you did not create calibrated data files at the time data were collected or downloaded,

- you need to apply new calibrations or sigma corrections to previously collected data, or
- you need to view housekeeping data not included in .dat files.

When you select Process Raw Files, the following dialog box appears:



8.4.1. Making Calibrated Data Files

When Make Calibrated Files is selected, you need to specify a calibration file to be used. You can type the path and name of the file directly, or use the **Browse...** button to open an Open File dialog box. You must also select the file or files you wish to process, using the familiar drive and directory list controls. The list in the center right of the dialog box shows those files that are contained in the drive and directory you specify, and whose names match the File name filter you specify. If Show only files matching calibration file is checked, as it is by default, HydroSoft will check the contents of the files and list only those that contain data from the instrument type and serial number specified by the selected calibration file.

You can select a single file or an arbitrary group of files from the list. Select a contiguous group of files by shift-clicking, and select or deselect individual files by Ctrl-clicking. Once you start processing, all the selected files will be processed.

The processed files will use the same base names as the source files, with their extensions set to “.dat”. They will be saved in the directory you specify. If you wish to save them in the same directory as the raw files from which they are generated, you can avoid having to select that directory manually by checking the Same location as raw files option.

8.4.2. Making Raw Decimal Files

The process for making raw decimal files is identical to that described above, except that there is no need for a calibration file. Controls relating to the calibration file will thus be disabled.

When you select the Make Raw Decimal Files option, an additional **Include Housekeeping** checkbox will appear, allowing you to control whether housekeeping data will be included in the file in addition to the primary optical data.

9. MENU COMMAND REFERENCE

9.1. FILE MENU

9.1.1. New

New causes the currently open data file, if any, to be closed, and a new empty file to be created. Because new HydroSoft data originate only from instruments, new files can be created only when an instrument is connected to the data window. If you select this command when no instrument is connected, it will first present the Connection dialog box (also see 5.1.1). If you have selected the Request user to name files when they are created option in the Preferences dialog box (see 9.1.12), you will be prompted to enter a name and location for the new file, and to specify whether a calibrated data file will be saved. If not, or if you click the Save Later button in the File Name dialog box, the data will be saved in an untitled file and you will be prompted for this information at the time the file is closed.

9.1.2. New Window

Opens a new, empty data window (section 4.1).

9.1.3. Open

Allows you to display an existing raw or calibrated data file. It presents a dialog box with familiar controls for selecting the drive and directory in which to browse, and the type of files to list. Although HydroSoft by convention saves raw and calibrated files with the “.raw” and “.dat” extensions, respectively, it does not require these extensions in order to read files correctly.

In order to open a raw data file, HydroSoft requires that an appropriate calibration file be loaded. If the currently loaded calibration does not match the data in the file you select, HydroSoft will offer the opportunity to select a different calibration, or to cancel the operation.

9.1.4. Save As

Opens a dialog box through which you specify the name and location for a file containing the currently displayed data.

If the current data are from a connected instrument, both the current data and subsequently received data will be automatically saved into the file you specify. If the data are from an existing file, a new copy of the data will be created.

Depending on the origin of the data you may have the option of saving either a raw file, calibrated file, or both:

- Data from a raw file can be saved as raw, calibrated or both.
- Data from a calibrated file can only be saved as calibrated.

- Date from an instrument must be saved as raw, but may also be saved as calibrated.

9.1.5. Close

Closes the currently displayed graph and corresponding file. If the data in the graph are from a connected instrument, and the file has not yet been named, you will be prompted to name and locate the file. If the file is named the data will have been saved already to that file, and it will close immediately.

9.1.6. Select Calibration

Opens a standard file-selection dialog in which you can designate which calibration file will be used in the current window. See section 7 for details about calibration files.

Once you select a calibration file using this command, that file becomes the default for subsequently opened windows. If the current window shows data from a raw file, the data will be recalculated using the newly-selected calibration file. This does not effect windows other than the one from which the command was executed.

9.1.7. View Calibration

Opens a dialog box that displays all settings of the current calibration file. You can also edit the values in this dialog box. For more information see section 1.

9.1.8. Save Calibration File

Opens a Save As dialog box with which you can select the name and location for a copy of the current calibration file to be saved.

9.1.9. Process Raw Files

Opens a dialog box through which you can convert raw data files, in batch fashion, to calibrated or raw decimal files. See section 8.4 for complete details.

9.1.10. Backscattering Parameters

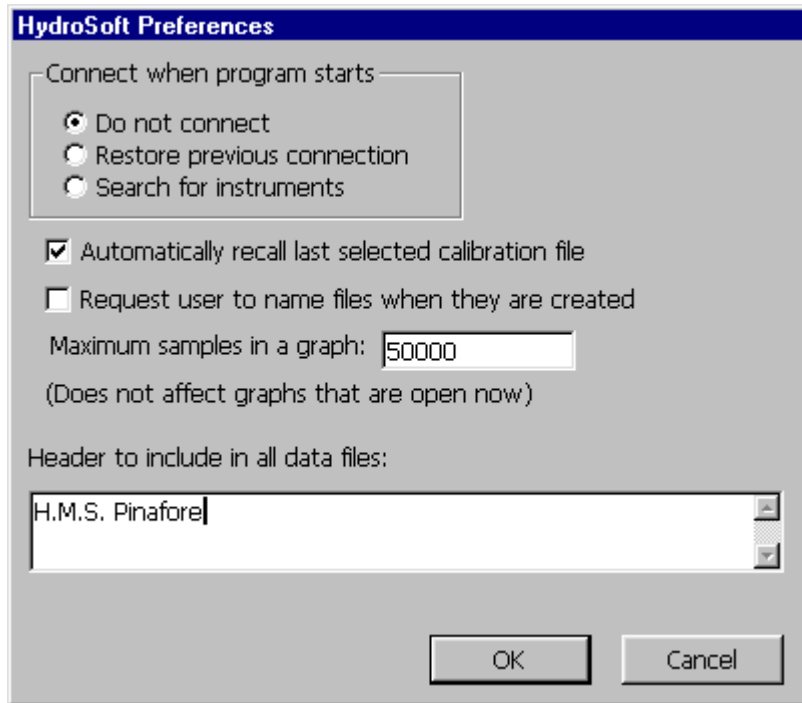
Opens a dialog box in which you can set the parameters used to calculate the backscattering coefficient, b_b . For details see section 7.3.

9.1.11. Sigma Correction Parameters

Opens a dialog box in which you can set the parameters used to adjust backscattering measurements to compensate for attenuation in the water. See section 7.4 for complete details.

9.1.12. General Preferences

Opens the following dialog box.



The Connect when program starts options control whether HydroSoft will automatically attempt to connect to an instrument when it starts up. For a complete description, see 5.1.6.

HydroSoft keeps a record of the calibration file you most recently selected. If Automatically recall last selected calibration file is checked, HydroSoft will load this file each time you restart the program. If not, no calibration will be loaded until you explicitly select it. For more about loading calibrations, see 7.1.

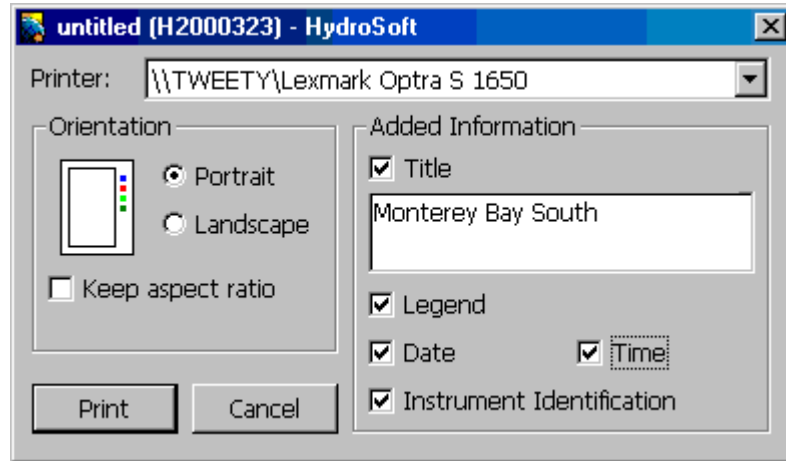
If Request user to name files when they are created is checked, HydroSoft will present the Save As dialog box whenever you create a file with the New command. In some deployment circumstances it is preferable to name a file and designate its location when it is first opened rather than when it is closed, as is more conventional. Once a file is named, HydroSoft continuously saves its data so that it is not necessary for the user to save it again before closing.

The number of data points graphs in HydroSoft can hold is limited to avoid excessive use of system memory. The Maximum samples in a graph setting controls this limit. Normally it can be set quite high, but if HydroSoft strains the memory capacity of your computer you may choose to reduce it. Note that the limit on points in a graph does *not* limit the number of data lines saved in files. The only limit on how large data files may grow is available space on the disk on which they are saved.

Finally, the Preferences dialog provides space to enter comments that will be saved in the header of every data file you create. For example, you may wish all files associated with a particular deployment to include the same identifying information.

9.1.13. Print Graph

Prints the current window's graph after presenting the following dialog box.



9.1.14. Export Graph

Saves an image of the current graph into a graphics file, in one of the following formats:

- bitmap (.bmp)
- Windows metafile (.wmf)
- Enhanced metafile (.emf)
- JPEG (.jpg)

JPEG format is not particularly well suited to line graphics, but is offered since it is widely used and can produce a high degree of compression. HydroSoft offers three levels of JPEG compression. The most compact files have the lowest quality, but are generally still quite legible.

9.1.15. Close Window

Closes the current data window and any accessory windows associated with it.

9.1.16. Exit

Closes all HydroSoft windows (first prompting you to save any unsaved data) and quits the program.

9.2. INSTRUMENT MENU

When an instrument is connected to a data window, the title of this menu changes to the instrument type, for example HydroScat-6. The menu title is Instrument when no instrument, or one of unknown type, is connected.

9.2.1. Connect

Opens a dialog box in which you specify how to connect to an instrument through the computer's COM port. See section 5.1.1 for details. HydroSoft must go through the connection process before it can communicate with an instrument, although it may be set to do this automatically when it starts up (see section 9.1.12).

9.2.2. Change Baud Rate

Opens a window in which you can select a new baud rate for communication between the currently connected instrument and your computer. Also see section 5.6

9.2.3. Show Terminal

Opens a terminal window that displays the raw output from a connected instrument. In the terminal window you can also type commands to the instrument and view its responses. This is not required for routine operation. Each data window to which an instrument is connected can have its own terminal window. See section 4.3 for details.

9.2.4. Disconnect

Severs communication with a connected instrument, and closes the computer's COM port. Before disconnecting, offers the opportunity to put the instrument to sleep.

9.2.5. Reset

You should only need to use **Reset** in the unusual case of an instrument that will not wake up or communicate normally. After asking you to confirm the command, it sends a signal intended to reboot the controller in a connected instrument. Specifically, it asserts a continuous logical high on the RS232 transmit line for a period you specify. The default period is 90 seconds, which is sufficient to reset most HOBI Labs instruments. Note, however, that the COM ports of some computers, especially laptops, do not produce enough voltage to activate this function on some a-Beta and c-Beta instruments. If the reset command fails, you may need to apply a voltage directly to the instrument's connector.

After a reset, you may need to use the **Connect** command to re-establish communications at the instrument's default baud rate, and you may also need to allow the instrument some time to initialize itself before it will respond to connection attempts. The longest time, about two minutes, is required by a c-Beta or a-Beta with full memory. In most cases the required time will be much shorter.

9.2.6. Start/Stop

The name of this command changes depending on whether the connected instrument is currently sending data. **Start** instructs the instrument to begin sending data in accordance with its own sampling schedule (see 5.3), and **Stop** instructs it to

cease. If no instrument is connected when you select **Start**, HydroSoft will open the Connect dialog box (section 5.1.1).

9.2.7. Sleep/Wake

The name of this command changes depending on the current state of the instrument. **Sleep** puts the connected instrument into its low-power sleep state, from which it must be woken with the **Wake** command before further communication is possible (unless you **Connect** to the instrument, which also wakes it).

9.2.8. Sampling Options

Opens a dialog box that allows you to set the parameters governing the sampling schedule of the connected instruments. See section 5.3 for details.

9.2.9. Set Date/Time

Opens a dialog box that allows setting the date and time of a connected instrument's real-time clock. See section 5.5 for details.

9.2.10. Get Data From Instrument

Opens a dialog box that displays a directory of casts stored in the connected instrument's memory, and allows downloading data into computer files. See section 5.4 for details.

9.2.11. Calibrate

Opens a window with controls for collecting and processing backscattering calibration data. Details are contained in a separate Backscattering Calibration Manual, available from HOBI Labs.

9.2.12. About Instrument

Opens a window showing the type, serial number and other attributes of the currently connected instrument (if any).

9.3. GRAPH MENU

9.3.1. Plot Vs. Depth

Sets the graph in the current window to display data as a depth profile. That is, the measured parameters will be displayed with reference to the horizontal axis, and the vertical axis will indicate depth.

9.3.2. Plot Vs. Time

Sets the graph in the current window to display a time series. That is, the measured parameters will be displayed with reference to the vertical axis, and the horizontal axis will indicate time.

9.3.3. Plot Vs. Wavelength

Opens a spectral plot window as described in section 6.6.

9.3.4. Zoom In

Adjusts the axes of the graph in the current window to expand the center portion of the graph by a factor of 2.

9.3.5. Zoom Out

Adjusts the axes of the graph in the current window to double the displayed data range (reducing the apparent extent of the data by a factor of 2).

9.3.6. Previous Zoom

Sets the axes of the graph in the current window to the settings they had before the last command that adjusted the zoom.

9.3.7. Auto Scale

Sets the axes of the graph in the current window to encompass the entire current data set.

9.3.8. Apply Default Properties

Sets all colors, markers and axis settings in the current graph to their default values. Default values are set through the Graph Properties dialog box. See section 6.2 for details.

9.3.9. Properties

Opens the Graph Properties dialog box, allowing adjustment of axis settings, display colors, and other aspects of graph appearance. See section 6.1 for complete details.

9.4. WINDOW MENU

The Window menu lists currently open Data windows, and also any Terminal, Spectral Plot, and Calibration windows associated with each Data window. Selecting a window from this menu brings it to the front. The menu also includes items for arranging multiple windows in a stack, or tiling them side-by-side or one above the other.